

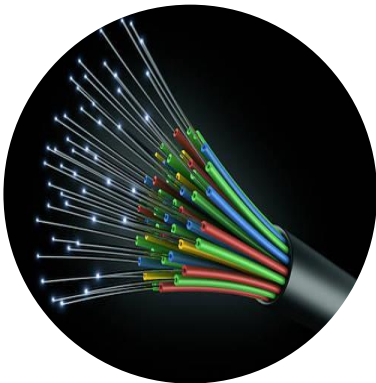
YOUR PARTNER IN VALUE ADDED SECURITY SOLUTIONS

AccessMax

ACCESS CONTROL



FIBER INSTALLATIONS



CCTV & SECURITY SOLUTIONS



COMPANY PROFILE 2019

Accessmax (Pty) Ltd.

Reg. No: 2015/271283/07

VAT No: 4060280205

Cell: +27 82 413 0482

Tel: +27 76 052 0936

Email: rassie@accessmax.co.za

sales@accessmax.co.za

admin@accessmax.co.za

44 Vetmuis Street
Theresapark
Gauteng
0155

Unit 3 Auckland Park
12 Auckland Street
Paarden Eiland
Cape Town

www.accessmax.co.za

INTRODUCTION

Accessmax (Pty) Ltd. is one of the leading suppliers, installers and system integrators of advanced access control and CCTV solutions. Accessmax was established in 2000 by Mr EP van der Merwe who devoted to a quality driven company which offers only the finest equipment available in an attentive integrated system. These systems are designed to achieve a cost effective approach to current and future needs. We are constantly keeping up to date with the latest technologies which led to our extension in the Fiber Optic industry which we integrated into our CCTV and Access Control systems. We are accredited installers of the highest quality products from the best security system suppliers. Our main objective is to guarantee customer satisfaction.

ABOUT US

Accessmax offer the following:

- Service level agreements – commitment guaranteed
- Rental solutions with maintenance included – Commitment to our installations and products
- 24-hour service (SLA)
- Only superior products from reputable suppliers are used
- Installations will comply to SABS and SANS regulations
- We pride ourselves in excellent quality and durable installations
- Since this is the foundation to minimize down time and improve longevity and to maximize the value of the investment made in your security system.
- A professional consultant will be appointed to offer a tailor made solution
- Our aim is a turnkey solution, fast and reliable service, and a long last relationship with our clients.

PRODUCTS & SERVICES

We offer a variety of services which are carried out by professional, equipped and motivated personnel. Our range of services includes design, installation and repair of:

Access Control

From the basic put-pin-to-enter to network operated Multi-door, 100 000 user Bio-metric (finger print) systems, operated from remote locations (Internet of GSM Systems). Gate motors and Boom gates for homes to Golf Estates.

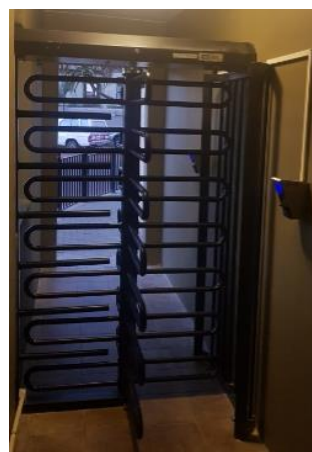
- Biometric
 - Physiological- face, fingerprint, hand and iris
 - Behavioural- keystroke, signature and voice

Benefits of a biometric system

- Increased security measures
 - Reduce costs of password and ID card maintenance
 - Ability to track employees and link activities
 - Faster login time
 - Improved security of sensitive information
 - Time and attendance
- Intercom Systems
 - Hard wired, wireless, GSM and VOIP systems
 - Automatic boom barrier and spike barrier

Automatic barrier offers efficient security at the exit and the entry points of factories, office complexes, corporate houses, residential buildings, parking lots, toll tax plazas or any road – way entry where medium to heavy traffic is expected.

 - Improves security
 - Control the flow of traffic
 - Save money on security expenses



CCTV Surveillance systems

From 'plug and play' to the latest in high-speed dome, motion-tracking, IP cameras to the basic Digital Video Recorder (DVR). From the most advanced, Analytics DVR, able to recognize faces, number plates, objects lost, direction of merchandise etc. to local viewing and remote viewing (Internet based or Local Area Network), for homes to casinos.

- **Dome CCTV Camera**

Dome CCTV Cameras are most commonly used for indoor security and surveillance applications.

- **Bullet CCTV Camera**

Bullet CCTV Cameras are often used in applications that require long distance viewing.

- **Day/Night CCTV Camera**

The camera is ideal for outdoor surveillance applications, where Infrared CCTV cameras cannot function optimally.

- **Infrared/Night Vision CCTV Camera**

These night-vision CCTV cameras have the ability to see images in pitch black conditions using Infrared LEDs and are ideal in outside conditions where lighting is poor to zero.

- **Network/IP CCTV Camera**

These cameras, both hardwired and wireless, transmit images over the Internet, often compressing the bandwidth so as not to overwhelm the web.

- **Wireless CCTV Camera**

Not all wireless cameras are IP-based. Some wireless cameras can use alternative modes of wireless transmission.

- **High-Definition HD CCTV Camera**

HD security cameras, also known as HD CCTV cameras and HD over Coax cameras, are capable of capturing high definition video surveillance footage.

- **Thermal Camera**

Thermal cameras are ideal for industrial applications including process control, critical component or vessel monitoring, and even early fire detection.

Alarm Systems

Inside and Outside detection at residential and industrial areas.

- **Wired Alarm System**

Wired alarm systems are your basic burglar alarm. This system uses a low-voltage electrical circuit that flows between two points throughout the doorways and windows or other entry points.

- **Wireless Alarm System**

Wireless alarm systems use a control panel and a series of sensors that are connected with built-in radio frequency transmitters. Once your alarm system is triggered, a signal is transmitted to the control panel and the alarm is activated.

- **Unmonitored Alarm System**

Unmonitored systems are typically a cheaper option compared to monitored systems. However, unmonitored systems don't provide the same level of protection as monitored systems because even if you have alarm alerts sent directly to your phone, you may be unable to respond due to bad cellular reception, or because you're away from your phone.

- **Monitored Alarm System**

Having a trusted professional looking out for you is always comforting. With a monitored home alarm system, comfort is what you will get.

Electric Fencing

From intruder detection at residential areas to animal fencing on farms.

Fiber Optic Installations

Splicing

We provide quality splicing services, bundled with our other services, to create a turnkey solution to meet the client's needs.

ACCREDITATIONS AND REGISTRATIONS

- Nemtek Electric Fencing Products



- Centurion



- Dahua Technology



- Controlsoft Access Installation partner



- IDS INHEP digital security



- Hikvision



PROJECTS COMPLETED

A list of various projects completed:

Department of Justice:

Installation and supply of Child Court Systems (CCTV). Accessmax Designed system that keeps the child out of the courtroom environment, but allows him or her testify, Audio and visually to the court. (In 107 courts across Limpopo, North West & Mpumalanga).

Department of Correctional services:

Installation of CCTV, Access Control & Intercoms in prisons which is viewed and operated remotely. (In 4 prisons around Pretoria).

Viva Bingo:

Installation and supply of Access Control, CCTV and Alarm system for gambling board (Gauteng) on various sites in Gauteng.

ThabaGare:

Installation & Supply of CCTV& Alarm for Gambling board (Mpumalanga - Lydenburg).

The Wilds:

Installation & Supply of CCTV, Access Control & Intercoms. (Security estate in Pta. East).

Estate 'dAfrique – Located in Hartebeespoort:

Installation of CCTV Access Control & Intercom.

ClickOn Communication:

Maintaining 400+ Visitor access panels across Gauteng and a few in Western Cape, on a daily basis.

Willow Acres:

Installation and maintenance of Electric Fences, Boom gates, CCTV Systems.

Lifestyle Management Park:

Installation and supply of 64 channel HD CCTV system.

Heron Hill Estate:

Installation and supply of spike barriers, turnstile, Morpho Biometric Access Control, HD CCTV.

Blue Valley Estate

Boom Gates.

21 Zambezi Estate:

Controlsoft Morpho Biometric Access Con.